

90 FRUITFUL YEARS

# *in the Philippines*

**NOURISHING FAMILIES.  
ENRICHING LIVES. EVERY DAY.**

THROUGHOUT OUR 90 YEARS OF  
OPERATIONS IN THE PHILIPPINES

**THIS YEAR 2016 DEL MONTE PHILIPPINES, INC (DMPI)  
MARKS 90 YEARS OF DOING BUSINESS AROUND THE WORLD.**

It has been a long and fruitful journey. The first pineapple seeds brought in from the pest devastated pineapple fields in Hawaii had grown lush in a new land. Our American and Filipino pioneers worked side by side to build the company from the ground up. New generations of highly skilled and dedicated Filipinos team have taken full rein of our expanding operations.

## 1920s



Ox-powered pineapple cultivation highlights Philpack's (now DMPI) humble roots in Bukidnon.



Experimental plot in Diklum (Bukidnon), 1926. Pineapple crowns from plot were gathered and planted as initial seeds.



Harry White, Philpack's 1<sup>st</sup> President (1926-1938), steers the company through start-up years.

# 1930s



Tagoloan Mayor Cosin persuades young women to work at Cannery.

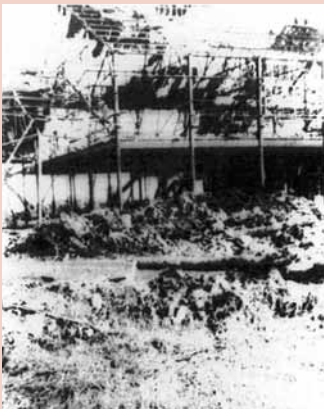


Mechanical farming starts at the Plantation, with purchase of US-made tractors and trucks.



Philippine President Manuel Quezon, and James McNeil Crawford, Philpack's 2<sup>nd</sup> President, at the Cannery.

# 1940s



Cannery complex, at the end of World War II.



Surviving crowns are gathered and replanted to begin a new plant cycle.



The Cannery gains new packing lines.

# 1950s



Further mechanisation improves yield.



Philpack opens its Sales and Marketing offices in Intramuros (Manila).



Workers celebrate Workers Day, highlighting worker unity.

90 FRUITFUL YEARS

*in the Philippines*

1960s



Cannery expands, with new can plant, processing lines for tomato, papaya and tuna, and a seaport.



Filipinos rise to top positions in Mindanao operations. Luis Lorenzo becomes the 1st Filipino Plantation Manager.

1970s



Philpack ventures into banana-growing for export, in the Davao and Misamis provinces.



Quality checks are conducted on all processed products.

1980s



Administrative employees get together as the Bugo Main Office Building opens.



For the 2<sup>nd</sup> time, DMPI is named Outstanding Employer by PMAP.

1990s



DMPI celebrates 65 years in the Philippines.



Manila-based Sales executives are honoured for outstanding performance.



DMPL, parent of DMPI, is listed on the Singapore Exchange (SGX).

# 2000s



NutriAsia Pacific Limited acquires majority stake in Del Monte Pacific Ltd.



DMPL acquires exclusive rights to the S&W brand globally except in Australia and New Zealand.



DMPL enters into a JV with the Bharti group in India.

# 2010s



DMPL acquires the consumer food business of Del Monte Corporation in the US. The acquisition reunites DMPL with our founding parent, and brings our products directly into the world's largest consumer market.



For the 1<sup>st</sup> time, the Board of Directors of Del Monte Pacific Ltd led by Board Executive Chairman Rolando Gapud visits the Company's operations.



Our Manila office is named after the late Jose Yao Campos, pioneer of the Asian pharmaceuticals industry and father of our CEO.



For the 1<sup>st</sup> time, DMPL shares are traded on the Mainboard of the Philippine Stock Exchange (PSE), 2013, giving Filipinos the opportunity to invest and be part of the success of our Company. DMPL is the first company to be dual-listed on the PSE and the SGX.

“

LOOKING FORWARD TO THE NEXT 90 YEARS, LET US PUT MORE VALUE INTO THE FRUIT THAT WE PRODUCE.”

MR JOSELITO D CAMPOS, JR  
Managing Director and CEO